

Application of Genetic Algorithm for Image Enhancement and Segmentation.

Miss. Komal R. Hole¹, Prof. Vijay S. Gulhane², Prof. Nitin D. Shellokar³

Abstract— Genetic algorithm is the type of Soft Computing method. The Genetic Algorithm (GA) is a model of machine learning which derives its behavior from a metaphor of the processes of evolution in nature. The aim is to enhance the quality of the image and to convert the image into segments to get more meaningful image and it will be easy to analyze the image using genetic algorithm. Genetic algorithm is the unbiased optimization technique. It is useful in image enhancement and segmentation. GA was proven to be the most powerful optimization technique in a large solution space. This explains the increasing popularity of GAs applications in image processing and other fields. Genetic Algorithms (GAs) are increasingly being explored in many areas of image analysis to solve complex optimization problems. This paper gives a brief overview of the canonical genetic algorithm and it also reviews the tasks of image pre-processing. The main task of machine vision is to enhance image quality with respect to get a required image perception. The GAs were adopted to achieve better results, faster processing times and more specialized applications. This paper introduces various approaches based on genetic algorithm to get image with good and natural contrast. The image enhancement is the most fundamental image processing tasks. And Image Segmentation is very difficult task. This paper includes the definition of image enhancement and image segmentation and also the need of Image Enhancement and the image can be enhanced using the Genetic Algorithm and the Image Segmentation using Genetic Algorithm.

Index Terms— Genetic algorithm, Image Segmentation, Mutation, Crossover.

I. INTRODUCTION

The term Genetic Algorithm was used by John Holland at very first [3] Genetic Algorithms (GAs) are basically the natural selection process invented by Charles Darwin where it takes input and computes an output where multiple solutions might be taken. The GAs is designed to simulate processes in natural system necessary for evolution. GA performs efficient search in global spaces to get an optimal solution. GA is more effective in the contrast enhancement and produce image with natural contrast. A Genetic Algorithm provides the systematic random search. Genetic Algorithms provide a simple and almost generic method to solve complex optimization problems. A genetic algorithm is a derivative-free and stochastic optimization method. A Genetic Algorithm needs less prior information about the problems to be solved than the conventional optimization schemes, such as the steepest descent method, which often require the derivative of the objective functions. Based on individual fitness value, genetic algorithm uses the operators such as reproduction, crossover

and mutation to get the next generation that may contain chromosomes providing better fitnesses [2]. Basically in Genetic Algorithm the new child or chromosome obtained is made up of combination of features of their parents. So genetic algorithm is applied on any image to get the new enhanced image which is much better than the original one that contains features of parents. Image enhancement techniques are used to improve image quality or extract the fine details in the degraded images. Most existing color image enhancement techniques usually have three weaknesses: (1) color image enhancement applied in the RGB (red, green, blue) color space is inappropriate for the human visual system; (2) the uniform distribution constraint employed is not suitable for human visual perception; (3) they are not robust, i.e., one technique is usually suitable for one type of degradations only.[1] GA has the ability to determine optimal number of regions of a segmentation result or to choose some features such as the size of the analysis window or some heuristic thresholds.

Genetic Algorithm works well for many practical problems. However, in complex design, simple GA may converge extremely slowly or it may fail, due to convergence to an unacceptable local optimum. Considerable research efforts have been made to improve GA. Some of these improvements are mentioned in[4].

The two parameters of genetic algorithm are crossover and mutation.

Crossover

Crossover is a genetic parameter which will combines two chromosomes (can also be called as parents) to produce a new chromosome (also called as offspring). The result of crossover will give the new chromosome may be better than both of the parents if it takes the best characteristics from each of the parents. Crossover occurs during evolution according to a user-definable crossover probability. The new offspring will have some properties from one parent and some properties from other parent.

Example, suppose parent1 is 11001011 and parent2 is 11011111 and after performing the crossover we will get the output which contains some part of parent1 and other from parent2 i.e. 11011111.

11001011 + 11011111 = 11011111

Mutation

Mutation can be takes place after the crossover get performed. This is to prevent falling all solutions in population into a local optimum of solved problem. The mutation depends on the encoding as well as the crossover. For example when we are encoding permutations, mutation could be exchanging two genes. Mutation changes the new offspring randomly. For binary encoding we can switch a few randomly chosen bits from 1 to 0 or from 0 to 1. Mutation can then be following:

Original offspring 1- 1101111010011110
 Mutated offspring 1- 1100111010011110
 Original offspring 2- 1101100100110110
 Mutated offspring 2- 110110100110110

Following is the Simple Genetic Algorithm which includes GA operators.[5]

```
function GeneticAlgo()
{
  Initialize population;
  Calculate fitness function;
  While(fitness value != termination criteria)
  {
    Selection;
    Crossover;
    Mutation;
    Calculate fitness function;
  }
}
```

II. IMAGE ENHANCEMENT

Image Enhancement technique is use to convert the original image into the better image. The input image can be from any image capturing device. There are various methods which can enhance the original image without losing its original good properties. Digital image enhancement techniques provide a multitude of choices for improving the visual quality of images. Appropriate choice of such techniques is greatly influenced by the imaging modality, task at hand and viewing conditions. This paper will provide an overview of underlying concepts, along with algorithms commonly used for image enhancement. The aim is just to enhance the properties of original image for the better output. The main purpose of image enhancement is to modify various image attributes to make the original image more suitable for any given task and for a specific observer. For this to achieve we can modify one or more attributes of the particular image. The attributes that are selected and are modified are specific to a given task. Edges are basic features of an image, which carry valuable information, useful in image analysis object classification. Therefore edge enhancement has been topic of fruitful research in recent years. Making use of a *global* method for image enhancement, that is incapable of adapting to the local spatial content in the image. In these cases a *local* procedure that enhances differently in different areas of the image is recommendable. And requirement for user interaction, as each image, treated as an individual in the population, should be rated subjectively by a human interpreter [12]

The following figure shows that the original image can be converted into the better image using the image enhancement technique.

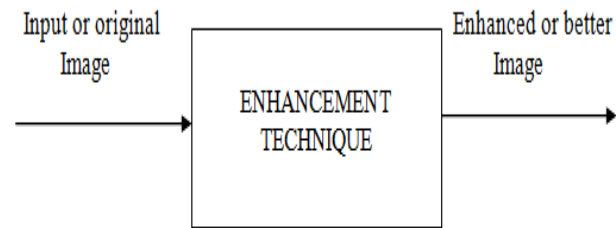


Fig1. Image Enhancement.

Image enhancement techniques can be divided into two broad categories and Normally, enhancement techniques use various combinations of methods from these two categories.:

1. Spatial domain methods.
2. Frequency domain methods.

A. Spatial Domain Method.

Spatial domain methods directly operate on pixels. These techniques are based on gray level mappings, and the type of mapping used for these techniques depends on the criterion chosen for enhancement. For example consider the problem of enhancing the contrast of an image. Let r denotes gray level in the original image and s denotes gray level in enhanced image. Suppose that for every pixel with level r in original image we create a pixel in the enhanced image with level

$$s = T(r) \quad (1)$$

where T denotes the gray level transformation function. $T(r)$ produces a 2-level (binary) image. This is also referred to as image thresholding. Many powerful enhancement processing techniques can be formulated in the spatial domain of an image. The value of a pixel with coordinates (x,y) in the enhanced image \hat{F} is the result of performing some operation on the pixels in the neighbourhood of (x,y) in the input image, F . The Neighbourhoods can be of any shape, but normally they are rectangular in shape. T is a transformation that maps a pixel value r into a pixel value s . The results of this transformation are mapped into the grey scale range as we are dealing here only with grey scale digital images. So, the results are mapped back into the range $[0, L-1]$, where $L=2^k$, k being the number of bits in the image being considered. So, for instance, for an 8-bit image the range of pixel values will be $[0, 255]$. [11]

B. Frequency Domain Method.

Frequency domain method operates on the Fourier transform of an image. Image enhancement in the frequency domain is straightforward. We simply compute the Fourier transform of the image to be enhanced, multiply the result by a filter (rather than convolve in the spatial domain), and take the inverse transform to produce the enhanced image.

Let $g(x,y)$ be an image formed by the convolution of an image $f(x,y)$ and a position invariant operator $h(x,y)$ i.e.

$$g(x,y) = h(x,y) * f(x,y) \quad (2)$$

In frequency domain methods, the image is first transferred in to frequency domain. It means that, the Fourier Transform of the image is computed first. All the enhancement operations are performed on the Fourier transform of the image and then the Inverse Fourier transform is performed to get the resultant image. These enhancement operations are performed in order to modify the image brightness, contrast or the distribution of the grey levels. As a consequence the pixel value (intensities) of the output image will be modified according to the transformation function applied on the input values[11].

III. IMAGE ENHANCEMENT USING GENETIC ALGORITHM

The function GeneticAlgo () can be applied to work on the image for enhancement. The main steps in solving a problem using GAs are [6]:

- 1 . Initializing the population of possible solutions .
- 2 . Calculation of an evaluation i.e. fitness function that plays the role of the environment, rating solution in terms of their 'fitness' .
- 4 . Definition of genetic operators (selection, crossover, mutation) that alter the composition of children during reproduction.
- 5 . Establishing values for the parameters (population size, probabilities of applying genetic operators) that the genetic algorithm uses .

The genetic algorithm includes following parameters.

A. Initial Population.

GAs search for the possible optimal solution under without having knowledge about the search spaces. Usually in GAs, the initial population consists of entirely random strings (chromosomes). However, random binary strings, each of length pq (q bits for each of the parameters) can be considered as chromosomes for individuals of the initial population .

B. Fitness Function.

Reproduction is a process in which individual strings are copied according to their objective function values, F , called the fitness function. The fitness function is fully objective, no human subjective term being required. In computer world, genetic material is replaced by strings of bits and natural selection replaced by fitness function. An individual fitness is measured by the sum of intensities of edges in an enhanced image, because a gray image with a visual good contrast includes many intensive edges [7].

C. Genetic Operators.

Genetic algorithm uses the principle of selection to produce solutions at each generation. Mating of parents is represented by cross-over and mutation operations. Selection is used to select the individuals for next generation. The crossover is used to recombine the information. It is used to recombine two input strings that is called as parent string to get better output string usually called as child string. Crossover has different types like one point crossover, two point crossover and uniform crossover. Mutation may be the chromosomes of individuals to be different from their parent individuals.

D. Domains of Parameters.

The parameters needed in defining a Genetic Algorithm for a specific problem, are (i) the population size,i.e., the number of chromosomes in each generation that means Population size provides how many chromosomes are in population (in one generation). Some problems have very large solution spaces (i.e. many variables, with a large range of permissible values for those variables). In these cases, a population of 100 individuals is probably not enough because it simply doesn't represent a large enough sample of the solution space. (ii) the number of generations to be generated . (iii) the probability of mutation i.e. mutation rate. Mutation rate is the probability of adding new information randomly. Mutation may be the chromosomes of individuals to be different from their parent individuals.

Chromosome Structure is based on LUT technique. This approach was introduced for gray images with low contrast that are captured by a camera and image capturing system. In this approach a relation between input and output gray level is determined to convert an original gray image into an enhanced images with good contrast [7]. This relation is represented by a look up table (LUT). Here the number of gray levels is 256. Therefore the range of minimum input gray level is 0 and the maximum input gray level is 255 and the range of output gray level is the same[8].

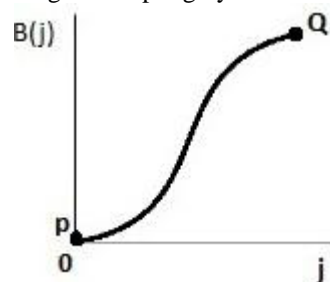


Figure 2: mapping Curve for enhanced image

Image enhancement is applied in every field where images are ought to be understood and analyzed. For example, medical image analysis, analysis of images from satellites etc. Image enhancement algorithms offer a wide variety of approaches for modifying images to achieve visually acceptable images. The choice of such techniques is a function of the specific task, image content, observer characteristics, and viewing conditions. The result showing the enhanced image of original image. Fig3 shows the difference between the original image and the enhanced image. Enhancement of image is very useful in positive sense for investigation of crimes. As enhancement will improve the clarity of the original image by removing the noise. so that it will be more easier to analyze any image.

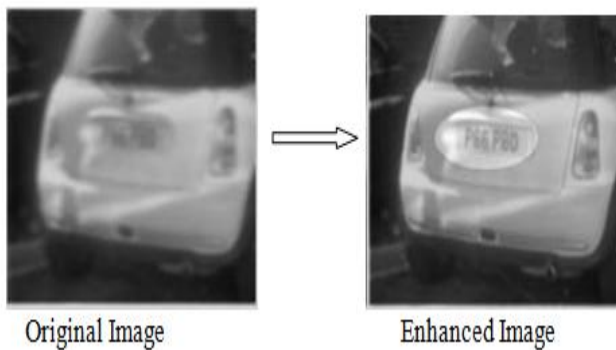


Fig3. Result of image enhancement

IV. IMAGE SEGMENTATION

Image Segmentation is the most difficult task in image processing. The original image is partitioned into different pieces for better analysis. The most difficult task in image segmentation is parameter selection. The goal of image segmentation is to cluster pixels into salient image regions, i.e., regions corresponding to individual surfaces, objects, or natural parts of objects.

Applications of image segmentation include:

- Segmentation is used for image recognition such as Face recognition.
- it is used in Medical imaging such as Diagnosis, Locating tumors and other pathologies, Treatment planning.
- Agricultural imaging such as irrigation, crop disease detection.
- Traffic control systems
- for Identifying objects for object-based measurements such as size and shape
- for Identifying objects in a moving scene for *object-based video compression (MPEG4)*
- Identifying objects which are at different distances from a sensor using depth measurements from a laser range finder enabling path planning for a mobile robots

There are segmentations based on different types are:

- 1) Segmentation based on greyscale
- 2) Segmentation based on texture
- 3) Segmentation based on motion
- 4) Segmentation based on depth

The image segmentation algorithms are divided into three major categories[10][9]:

1. Edge Based
2. Region Based
3. Clustering Based

1. Edge Based Techniques

Edges are basic features of an image, which carry valuable information, useful in image analysis object classification. Edge detection includes the detection of boundaries between different regions of the image. Due to these boundaries discontinuities occurs between the pixels of the chosen feature such as color, texture and intensity.

2. Region Based Techniques

Region splitting is an image segmentation method in which pixels are classified into regions. Any particular image contains various regions. The image can be segmented by considering the different regions of the image. Each region has a range of feature values, with thresholds being delimiters. It is very important to choose these thresholds, as it greatly affects the quality of the segmentation. This tends to excessively split regions, resulting in over segmentation.

3. Clustering Based Techniques

Clustering separates the image into various classes which does not require any prior information. In this the data which belong to same class should be as similar as possible and the data which belongs to different class should be as different as possible.

V. IMAGE SEGMENTATION USING GENETIC ALGORITHM.

The image segmentation using genetic algorithm can be done using Parameter selection and pixel level segmentation, where parameter selection includes the genetic algorithms which are used to modify the parameters of an existing image segmentation method to improve its output. and Pixel-level segmentation includes genetic algorithms are used to perform region labeling. In most image segmentation methods, the first method is used more often

The adaptive image segmentation consists following steps[10]:

1. Compute image statistics.
2. Generate an initial population.
3. Segment the image using initial parameters.
4. Compute the segmentation quality measures.
5. While not(stopping conditions) Do
 - 5a. select individuals using the reproduction operator
 - 5b. generate new population using the crossover and mutation operators
 - 5c. segment the image using new parameters
 - 5d. compute the segmentation quality measures

End

6. Update the knowledge base using the new knowledge structures.

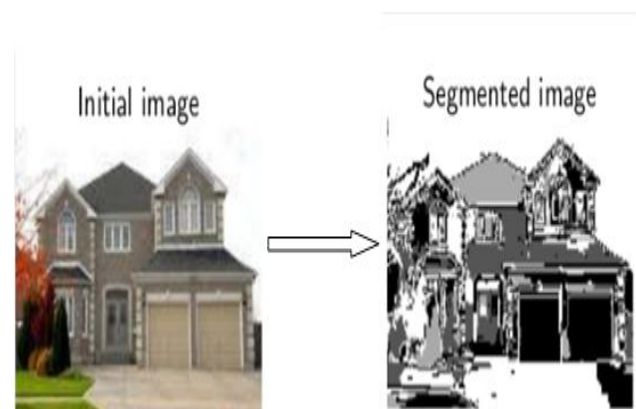


Fig4. Result of image segmentation.

VI. CONCLUSION

Genetic Algorithm has many advantages in obtaining the optimized solution in image processing. It was proved to be the most powerful optimization technique in a large space. Various tasks from basic image contrast and level of detail enhancement, to complex filters and deformable models parameters are solved using this paradigm. The algorithm allows to perform robust search without trapping in local extremes. Genetic algorithm allows to perform robust search for finding the global optimum. The result of the optimization depends on the chromosome encoding scheme and involvement of genetic operators as well as on the fitness function. However the quality of image segmentation can be improved by selecting the parameters in an optimized way. Image enhancement is the improvement of digital image quality, without knowledge about the source of degradation.

REFERENCES

- [1] M.S.Shyu, and J.J.Leou, , “A genetic algorithm approach to color image enhancement,” Volume 31, Issue 7, pp. 871–880, 31 July 1998.
- [2] X.Z.Gao, “Soft Computing Methods for Control and Instrumentation,” Institute of Intelligent Power Electronics Publications Espoo, pp.4, May 1999.
- [3] J.H. Holland, “Adaptation in Natural and Artificial Systems,” , University of Michigan Press, pp.183, 1975, re-issued by MIT Press 1992.
- [4] A.A. Abarghouei, and A. Ghanizadeh, and S.M. Shamsuddin, “Advances of Soft Computing Methods in Edge Detection,” Int. J. Advance. Soft Comput. Appl., Vol. 1, pp.165, November 2009.
- [5] Dr. R.K Bhattacharjya, “Introduction To Genetic Algorithms,” *IIT Guwahati*, pp.12, 2012.
- [6] S.K. Pal, and D. Bhandari, and M. K. Kundu , “Genetic algorithms for optimal image enhancement,” Pattern Recognition Letters 15, pp.261-271, March 1994.
- [7] F.Saitoh, “Image contrast enhancement using genetic algorithm,” IEEE international conference on systems, man, and cybernetics, IEEE SMC’99, Vol. 4, pp. 899 – 904, 1999.
- [8] A. Verma and Archana, “A Survey on Image Contrast Enhancement Using Genetic Algorithm,” International Journal of Scientific and Research Publications, Volume 2, Issue 7, 1 ISSN 2250-3153, pp.2 July 2012.
- [9] R.K. Mohanta, and B. Sethi, “A Review of Genetic Algorithm application for Image Segmentation,” J.Computer Technology & Applications, Vol 3 (2), pp.720-723, .
- [10] B.Bhanu, and S. lee, and J. Ming, “Adaptive Image Segmentation using Genetic Algorithm,” IEEE Transactions on Systems, Man and Cybernetics, Vol 25(12), pp.1553, Dec 1995.
- [11] R. Maini, and H. Aggarwal , “A Comprehensive Review of Image Enhancement Techniques,” Journals of Computing, Vol. 2, Issue3, ISSN 2151-9617, pp.8, MARCH 2010.
- [12] Poli R., and Cagnoni S, “Evolution of Pseudo-colouring Algorithms for Image Enhancement”, Technical Report:CSRP-97-5, Univ. of Birmingham, pp.22, 1997.

First Author Komal R. Hole, M.E.(pursuing), Computer Science and Engineering, Sipna College of Engineering and Technology, Amravati, India.



Second Author Prof. Vijay S. Gulhane, M.E., Computer Science and Engineering , Sipna College of Engineering and Technology, Amravati, India.



Third Author Prof. Nitin D. Shellokar, ME, Computer Science and Engineering, Sipna College of Engineering and Technology, Amravati, India.

